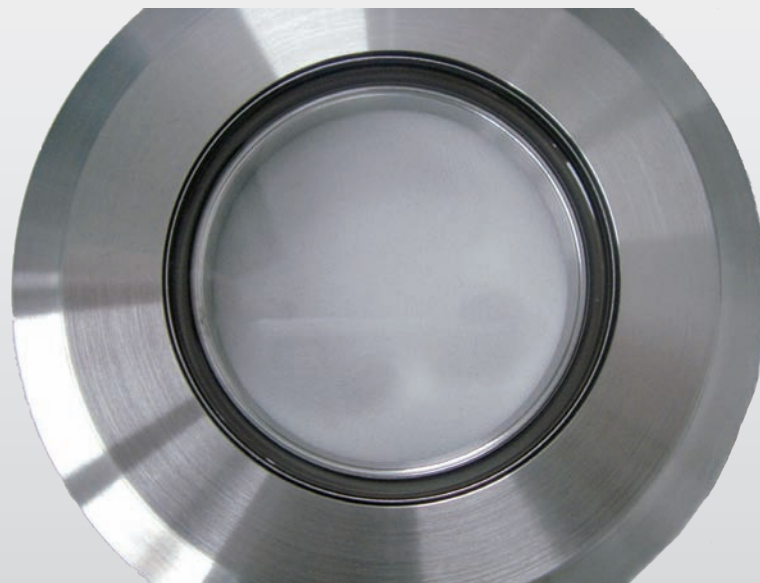


QCF Viewport

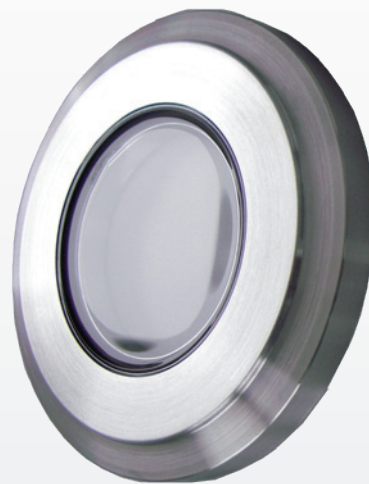
Viewport with quick connection

- Uniform force distribution
- Ideal for frequent opening of the vacuum chamber
- Quick and easy mounting with Quick CF connection
- Material stainless steel 304
- Mounting with annealed copper gaskets
- For HV and UHV applications
- Available from stock



Technical Data

■ Flange diameter	DN100
■ Material flange	stainless steel 304
■ Window material	borosilicate glass
■ Glass thickness	3.5 mm
■ Viewing diameter	65 mm
■ Intermediate material	Kovar®
■ Temperature range	up to 350 °C
■ Heating rate	3 K/min
■ Leak rate	< 1.0E-11 mbar l/s



Order Information

Order Code	Nominal diameter	Material
VPZ100QCF-304	DN100	Stainless steel 304