

MVC-3 A and MVC-3 C

Controllers for active vacuum gauges

Absolute pressure measurement from 10⁻¹⁰ to 1500 mbar



MVC-3 A



MVC-3 C

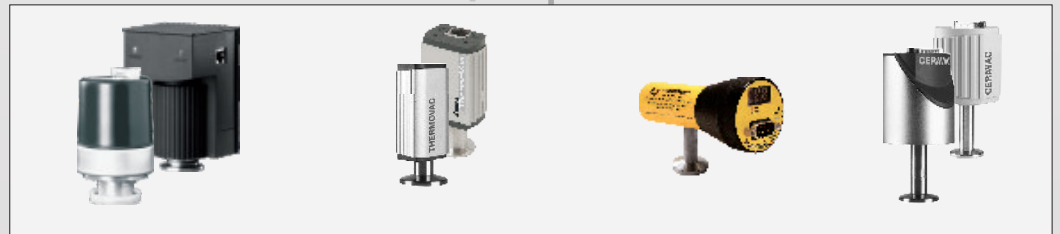
1x

2x (optional)

2x



ATMION®
Hot cathode/ Pirani



PENNINGVAC PTR
Cold cathode and
Cold cathode/ Pirani

THERMOVAC TTR
Pirani and
Pirani/CDG (capacitive)

CVM-211
Convection
Enhanced Pirani

CERA-VAC CTR
CDG (capacitive)

(Connectable vacuum gauges)

Features

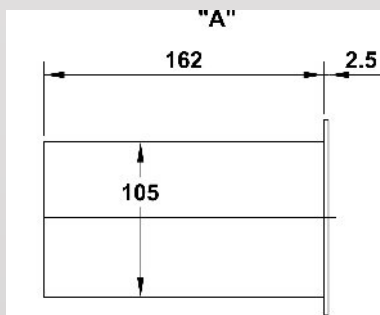
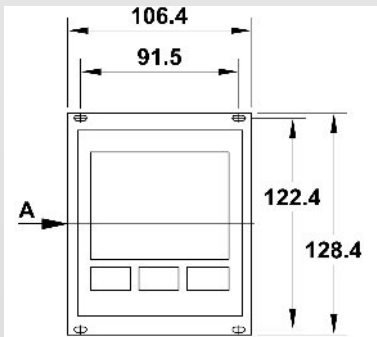
- Automatic vacuum gauge identification
- Large display line for each measurement channel
- Analogue outputs, RS232 and RS485 interfaces, set points and digital control inputs
- Clearly structured front key menu for access to all functions and parameters
- Robust, closed aluminium housing

Benefits

- Wide range of connectable vacuum gauges
- Highly accurate signal processing
- Flexible use in all areas of vacuum technology
- Simple and clear operation
- Free LabVIEW driver (virtual instrument) available
- Energy-saving forward-looking technology

Connectable active gauges

- **ATMION® COMPACT / ATMION® STANDARD**
Wide range vacuum gauge
Bayard-Alpert / Pirani
1 x 10⁻¹⁰ ... 1000 mbar
- **CERAVAC CTR 90 / 100**
CERAVAC CTR 91
Capacitance diaphragm gauge
(Temperature compensated or temperature controlled)
4 decades per version
from 1 x 10⁻⁵ ... 1333 mbar
- **THERMOVAC TTR 90 / 91 / 96**
THERMOVAC TTR 211 / 216
Pirani vacuum gauge
5 x 10⁻⁴ ... 1000 mbar
- **THERMOVAC TTR 100**
Combined Pirani / capacitance vacuum gauge
5 x 10⁻⁴ ... 1500 mbar
- **CVM-211**
Convection enhanced Pirani vacuum gauge
1 x 10⁻⁴ ... 1333 mbar
- **PENNINGVAC PTR 225 / 237**
Penning vacuum gauge
1 x 10⁻⁹ ... 1 x 10⁻² mbar
- **PENNINGVAC PTR 90**
Combined inverted magnetron / Pirani vacuum gauge
5 x 10⁻⁹ ... 1000 mbar



Technical data

MVC-3 A and MVC-3 C

- Display range 1E-8 ... 1.5E+5 Pa | 1E-10 ... 1500 mbar | 7.5E-11 ... 1125 Torr
dependent on gauge
- Measurement range 50 / s
- Measurement rate mbar, Pa, Torr (switchable)
- Units LED (green), 1 line per status (matissa 4-digit, exponent 2-digits), unit, relay state, Pir/Fil1/Fil2
- Display 4 / s
- Display rate 1 per channel, 0 ... 10 V, depend on gauge
- Analog outputs 2 relays per channel (SPDT), 30 VDC / 1 A
- Set points 4 front keys
- Controls RS232 and Rs485
- Interfaces 5 ... 50 °C
- Temperature range (operating) Aluminium, 1/4 x 19", 3 U
- Housing IP 40
- Protection category 100...240 VAC. 50/60 Hz (max. 60 W)
- Power supply IEC plug (AC), D-Sub 25 pin (relays), D-Sub 9 pin (RS232 and RS485), D-Sub 15 pin (analog and digital I/O); Vacuum gauge connectors depend on the version
- Electrical connectors

MVC-3 A

- Measurement channels for ATMION®: 1
for other active gauges: 2 (optional)
- Digital control inputs ATMION® on/off, Degas on/off, PTR on/off
- Ionization gauge auto on/off ATMION®, PTR 225/237: optionally via a Pirani gauge
- Connectable active gauges ATMION® COMPACT / STANDARD;
CERAVAC CTR 90 / 100 / 91 (optional);
THERMOVAC TTR 90 / 91 / 96 / 211 / 216 / 100 (opt.);
CVM-211 (log-linear version only) (optional);
PENNINGVAC PTR 225 / 237 / 90 (optional)

MVC-3 C

- Measurement channels 2 (not adequate for ATMION®)
- Digital control inputs PTR on/off
- Ionization gauge auto on/off PTR 225/237: optionally via a Pirani gauge
- Connectable active gauges CERAVAC CTR 90 / 100 / 91;
THERMOVAC TTR 90 / 91 / 96 / 211 / 216 / 100;
CVM-211 (log-linear version only);
PENNINGVAC PTR 225 / 237 / 90

Order data

MVC3-A0	MVC-3 A with 1 Channel for 1 ATMION®
MVC3-AM	MVC-3 A with 1 Channel for ATMION® and 2 Channels for CTR/ TTR/ CVM-211/ PTR
MVC3-C	MVC-3 C with 2 Channels for CTR/ TTR/ CVM-211/ PTR

Accessories

ATL3	Cable for ATMION®, 3 m
LSL3	Cable for TTR, PTR, 3 m
SSL3	Cable for CVM-211, 3 m
CSL3	Cable for CTR, 3 m
ATLPC3	RS232 interface cable, 3 m, 2 x D-Sub 9
USB-RS232-KONV	USB 2.0/ RS232 converter; USB cable 0,8 m, driver CD

VACOM

Vakuum Komponenten & Messtechnik GmbH

Gabelsbergerstraße 9 ■ 07749 Jena ■ Germany
Tel. +49(0)3641 4275-0 ■ Fax +49(0)3641 4275-82
info@vacom-vacuum.com ■ www.vacom-vacuum.com

