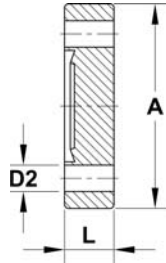


Micro CF Flanges

Micro CF Blank flanges, fixed, stainless steel



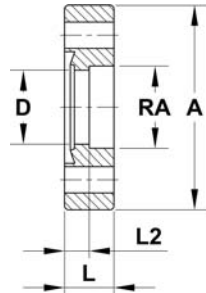
Technical data

■ Option with tapped holes

Order code	DN	A	D2	L
F10-316	10	25	3.2	6

- For clean room compatible packaging please add "-CRP" to the order code

Micro CF Bored flanges, fixed, stainless steel



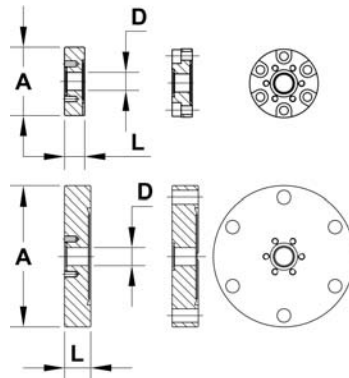
Technical data

■ Option with tapped holes

Order code	DN	A	D	L	L2	RA
F10B10-316	10	25	9	6	3	10

- For clean room compatible packaging please add "-CRP" to the order code

Micro CF Reducer flanges, stainless steel 316L



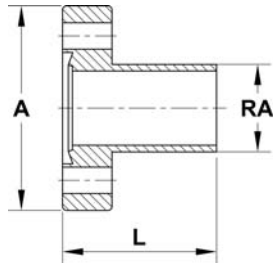
Order code	DN	DN2	A	D	L
ZL016010-316	16	10	34	9	10
ZL040010-316	40	10	70	9	13

- For clean room compatible packaging please add "-CRP" to the order code
- ZL1610: applicable with 6 x M4 hexagon sockets and 6 x M3 hex-head screws

Micro CF Fittings

1

Micro CF Tubulations (half nipples), fixed, stainless steel

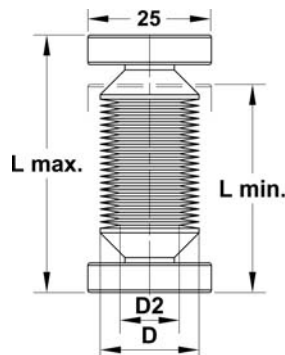


Order code	DN	A	L	RA
TU10-30-10-316	10	25	30	10

- For clean room compatible packaging please add "-CRP" to the order code

Micro CF Welded Bellows

Micro CF Welded bellows



Technical data

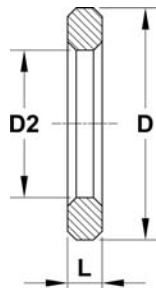
- Flange material: stainless steel 316L
- Bellows material: stainless steel 316L
- Bakeout temperature: to 450 °C

Order code	DN	D	D2	Lmax	Lmin	Hub
EWB10-10	10	20	10	57	47	10

- Other lengths on request
- For clean room compatible packaging please add "-CRP" to the order code

Micro CF Gaskets

Micro CF Gaskets

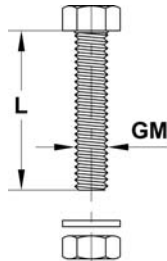


Order code	DN	D	D2	L	Material
CU10	10	13.4	8.5	2	OFHC
VGF10	10	13.5	7.5	3	FKM

- For clean room compatible packaging please add "-CRP" to the order code

Micro CF Connecting Elements

Micro CF Bolts, stainless steel



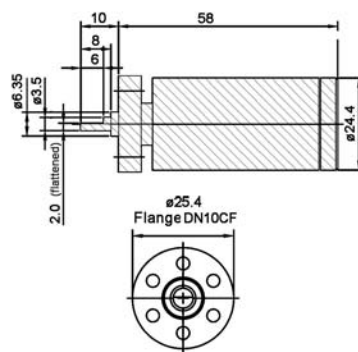
Technical data

- Packing unit 25 pieces

Order code	DN	M	L	Screw type
NBW316	10	M3	16	hexagon
NBW635	40	M6	35	hexagon
BW312	10	M3	12	hexagon
CW416	16	M4	16	allen

Micro CF Mechanical Feedthroughs

Micro CF Rotary feedthrough



- Smallest UHV compatible rotary feedthrough
- High torque / size ratio
- Compact

Technical data

- Construction one piece
- Housing material stainless steel 316L
- Shaft style stub, Ø 3.5 mm, with flattening
- Brake-away torque 0.18 Nm
- Maximum no load spin speed 200 rpm
- Maximum shaft axial thrust 20 N
- Bakeout temperature to 250 °C

Order code	DN	Description
MD10TX000Z	10	MD10-feedthroughs

Please see other versions in chapter 8 "Mechanical Feedthroughs".

Micro CF Mechanical Feedthroughs

1

Micro CF Linear translator

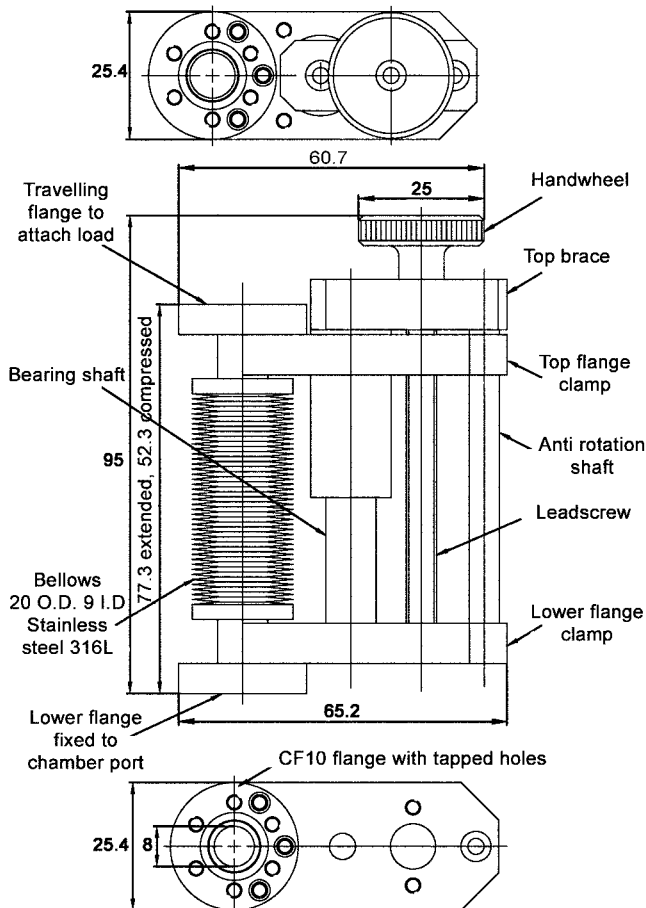


- High capability
- Rugged frame construction
- Smooth and precise motion along the Z axis (1 mm stroke / handwheel revolution)

Technical data

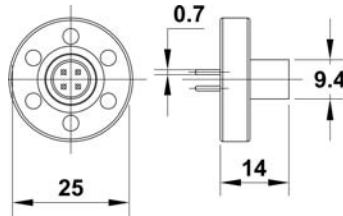
- Actuation manual handwheel
- Standard stroke 25 mm
- Bellows material stainless steel 316L
- Life cycle 10,000 cycles
- Bakeout temperature to 250 °C

Order code	DN
LSM10-25H	10



Micro CF Electrical Feedthroughs

Micro CF Feedthrough, 4 pins



- Very compact
- Stainless steel housing, ceramic insulator, gold-plated Kovar® pins
- Atmosphere side: standard MINI-SNAP connector, strain-relieved

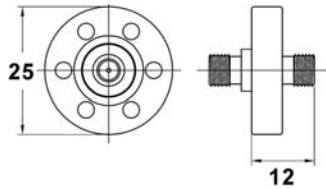
Technical data

- Leak rate < 1.0E-9 mbar l/s
- Temperature range -200 °C to 350 °C
- Current (all contacts loaded) 5.25 A
- Magnetic yes

Order code	DN
CF10-VB-0B-04	10

Please see chapter 7 "Electrical Feedthroughs" for further information.

Micro CF SMA feedthrough, grounded shield



- Very compact
- Stainless steel housing, ceramic insulator, gold-plated Kovar® pins
- Atmosphere and vacuum side: standard MINI-SNAP connector, strain-relieved

Technical data

- Leak rate < 1.0E-9 mbar l/s
- Impedance 50 ohm
- Temperature range -200 °C to 350 °C
- Current 10 A
- Magnetic yes

Order code	DN
CF10-VB-SMA2	10

Please see chapter 7 "Electrical Feedthroughs" for further information.

